

Z:\PROJECTS\2013\13-024 Psomas-Tangerine Rd-Dove Mtn to La Canada\Draw\13-024_Fig 4 Ext & 6 Prop.dwg (Fig 4 Ext Cond 1) Plotted Jun 03, 2016 at 10:06am by Robin

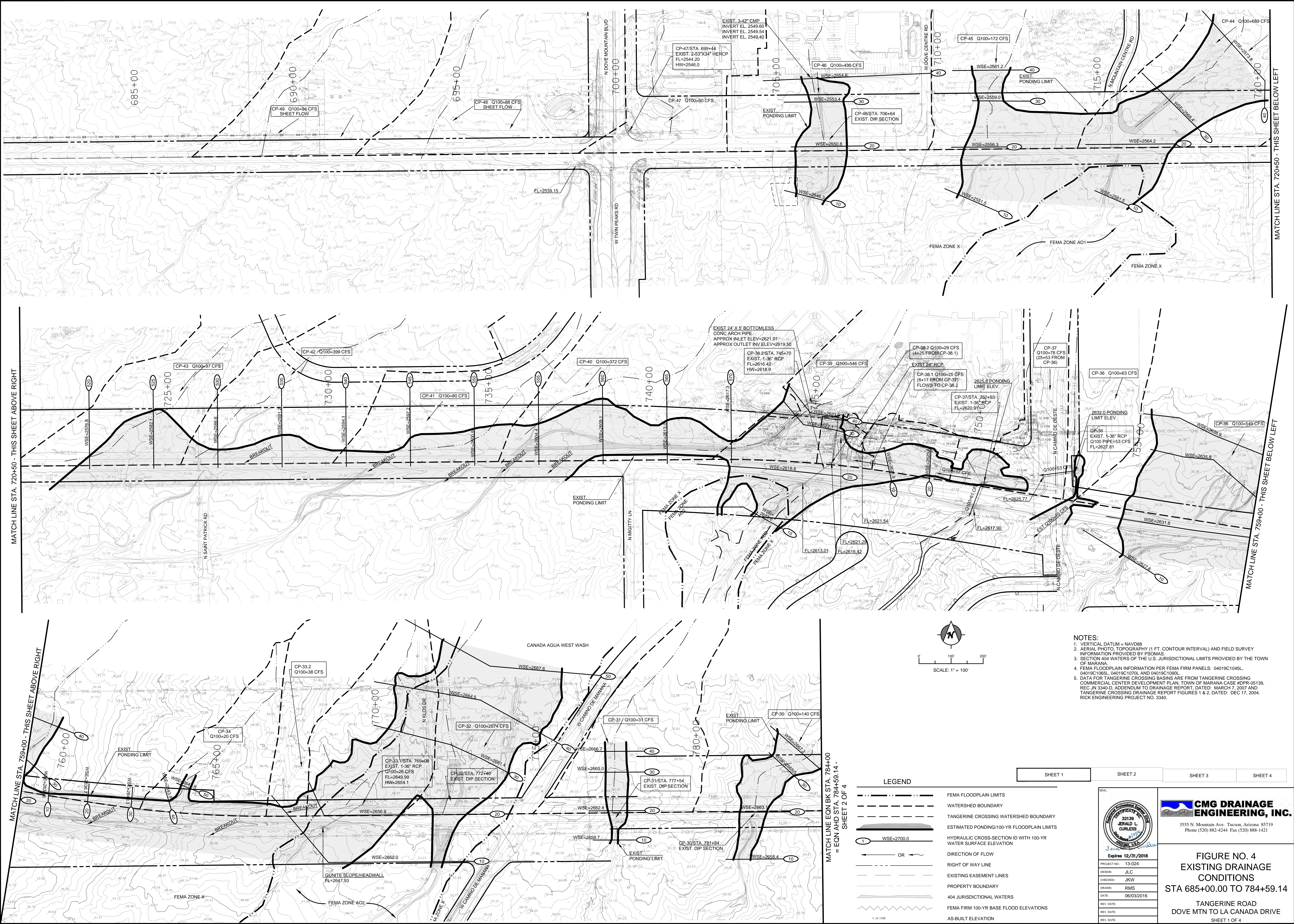


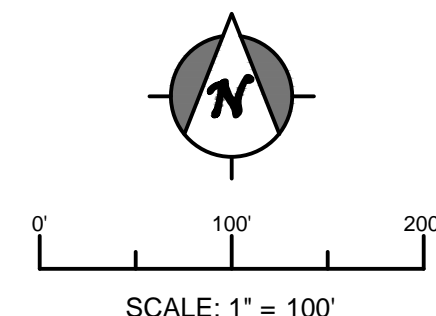
FIGURE NO. 4
EXISTING DRAINAGE
CONDITIONS
STA 685+00.00 TO 784+59.14
TANGERINE ROAD
DOVE MTN TO LA CANADA DRIVE
SHEET 1 OF 4



MATCH LINE STA. 821+00 - SEE SHEET 3 OF 4

NOTES:

1. VERTICAL DATUM = NAVD88
2. AERIAL PHOTO, TOPOGRAPHY (1 FT. CONTOUR INTERVAL) AND FIELD SURVEY INFORMATION PROVIDED BY PSOMAS.
3. TOWN OF ARIZONA WATERS OF THE U.S. JURISDICTIONAL LIMITS PROVIDED BY THE TOWN OF MARANA.
4. FEMA FLOODPLAIN INFORMATION PER FEMA FIRM PANELS: 04019C1045L, 04019C1065L, 04019C1075L AND 04019C1090L.
5. DATA FOR TANGIERINE CROSSING BASINS ARE FROM TANGIERINE CROSSING COMMERCIAL CENTER DEVELOPMENT PLAN, TOWN OF MARANA CASE #DPR-05139, REC IN 334-D. ADDENDUM TO DRAINAGE REPORT, DATED: MARCH 7, 2007 AND TANGIERINE CROSSING COMMERCIAL CENTER DRAINAGE FIGURES 1 & 2, DATED: DEC 17, 2004. RICK ENGINEERING PROJECT NO. 3340.



SHEET 1	SHEET 2	SHEET 3	SHEET 4
---------	---------	---------	---------



Expires 12/31/2018	
PROJECT NO.:	13-024
DESIGN:	JLC
CHECKED:	JCW
DRAWN:	RMS
DATE:	06/03/2016
REV. DATE:	
REV. DATE:	
REV. DATE:	



FIGURE NO. 4
EXISTING DRAINAGE
CONDITIONS
STA 784+59.14 TO 821+00.00
TANGERINE ROAD
DOVE MNT BLVD TO LA CANADA DR
SHEET 2 OF 4

SHEET 2 OF 4

