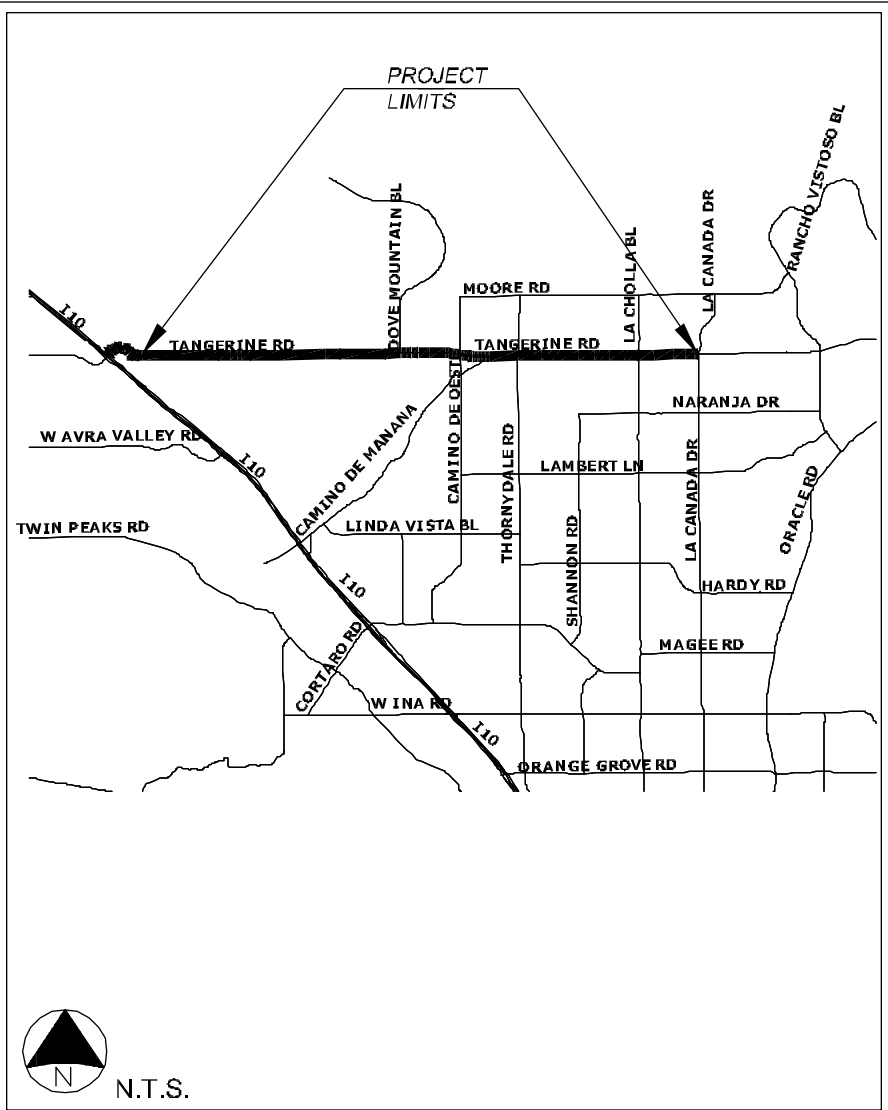
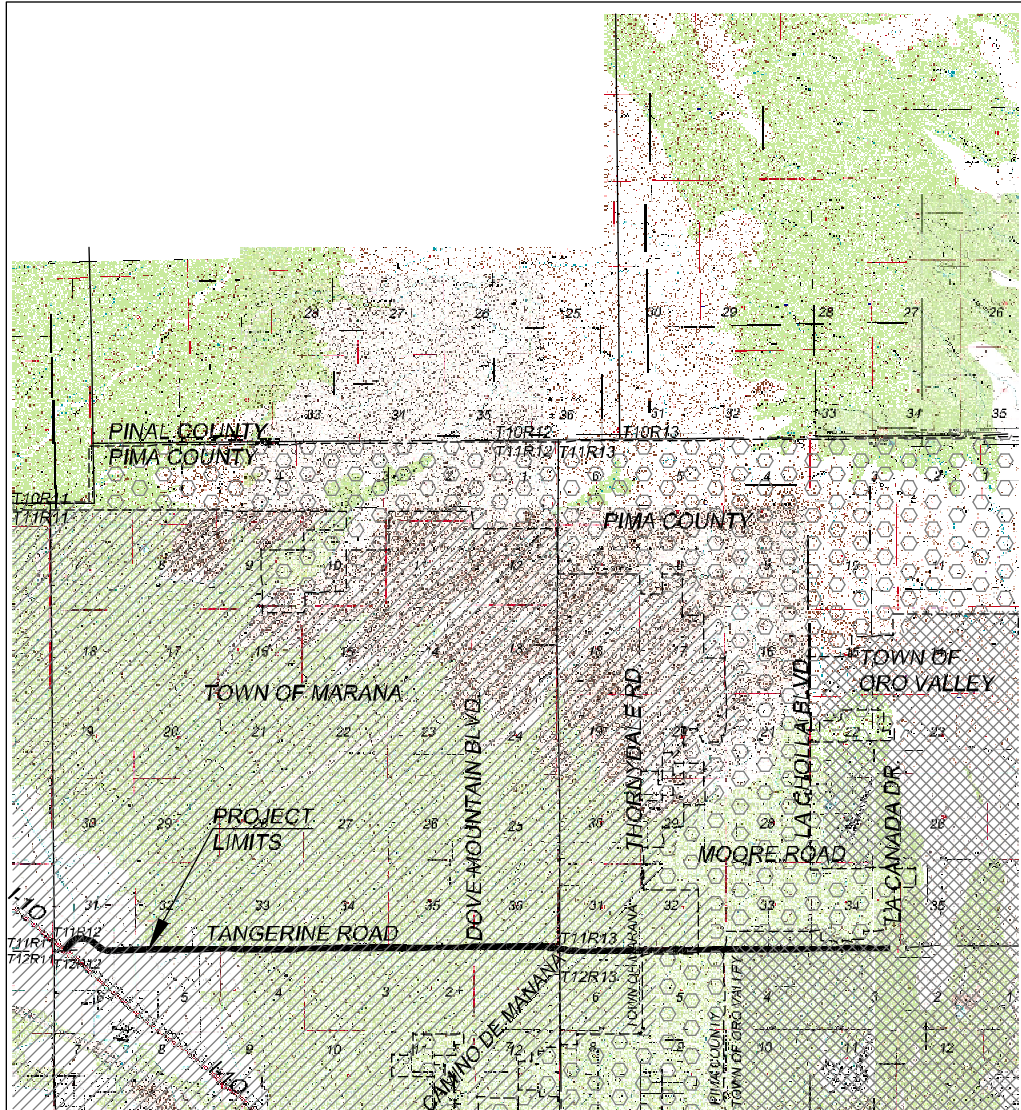


FIGURES



LEGEND




-  PIMA COUNTY
-  TOWN OF MARANA
-  TOWN OF ORO VALLEY

FIGURE 1:
LOCATION MAP/VICINITY MAP


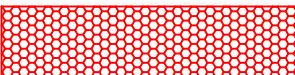

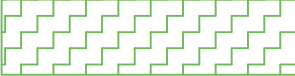


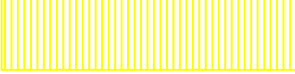
T11S, R 12E, PORTIONS OF SECTIONS 31 THROUGH 36
 T12S, R12E, PORTIONS OF SECTIONS 1 THROUGH 6
 T12S, R13E, PORTIONS OF SECTIONS 3 THROUGH 6
 T11S, R13E, PORTIONS OF SECTIONS 31 THROUGH 34
 G.&S.R.M., TOWN OF MARANA, PIMA COUNTY, ARIZONA

CMG JOB No. 10-027

APPROX. SCALE: 1"=12000'

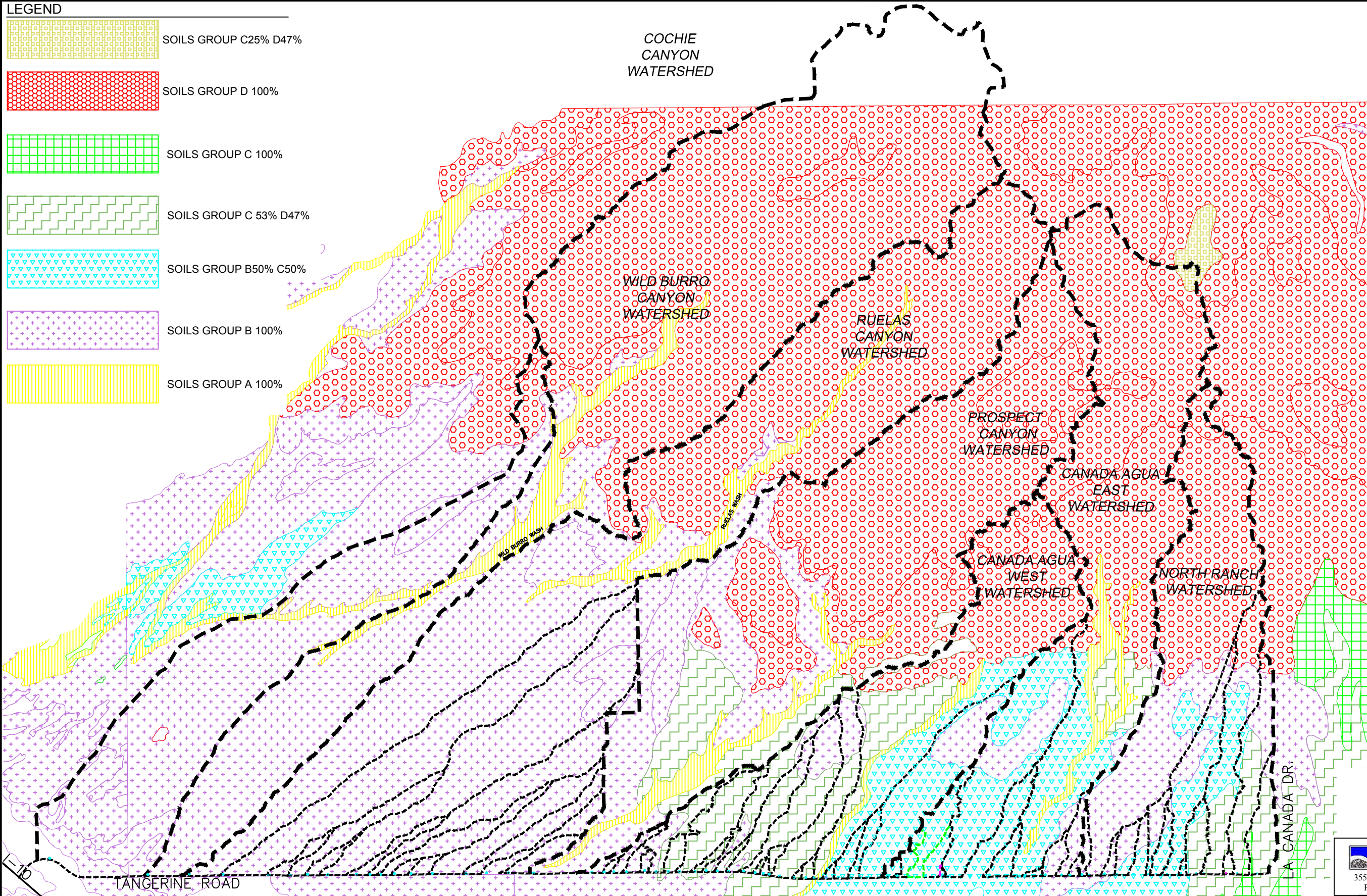


LEGEND

-  SOILS GROUP C25% D47%
-  SOILS GROUP D 100%
-  SOILS GROUP C 100%
-  SOILS GROUP C 53% D47%
-  SOILS GROUP B50% C50%
-  SOILS GROUP B 100%
-  SOILS GROUP A 100%



SCALE: 1"=4000'



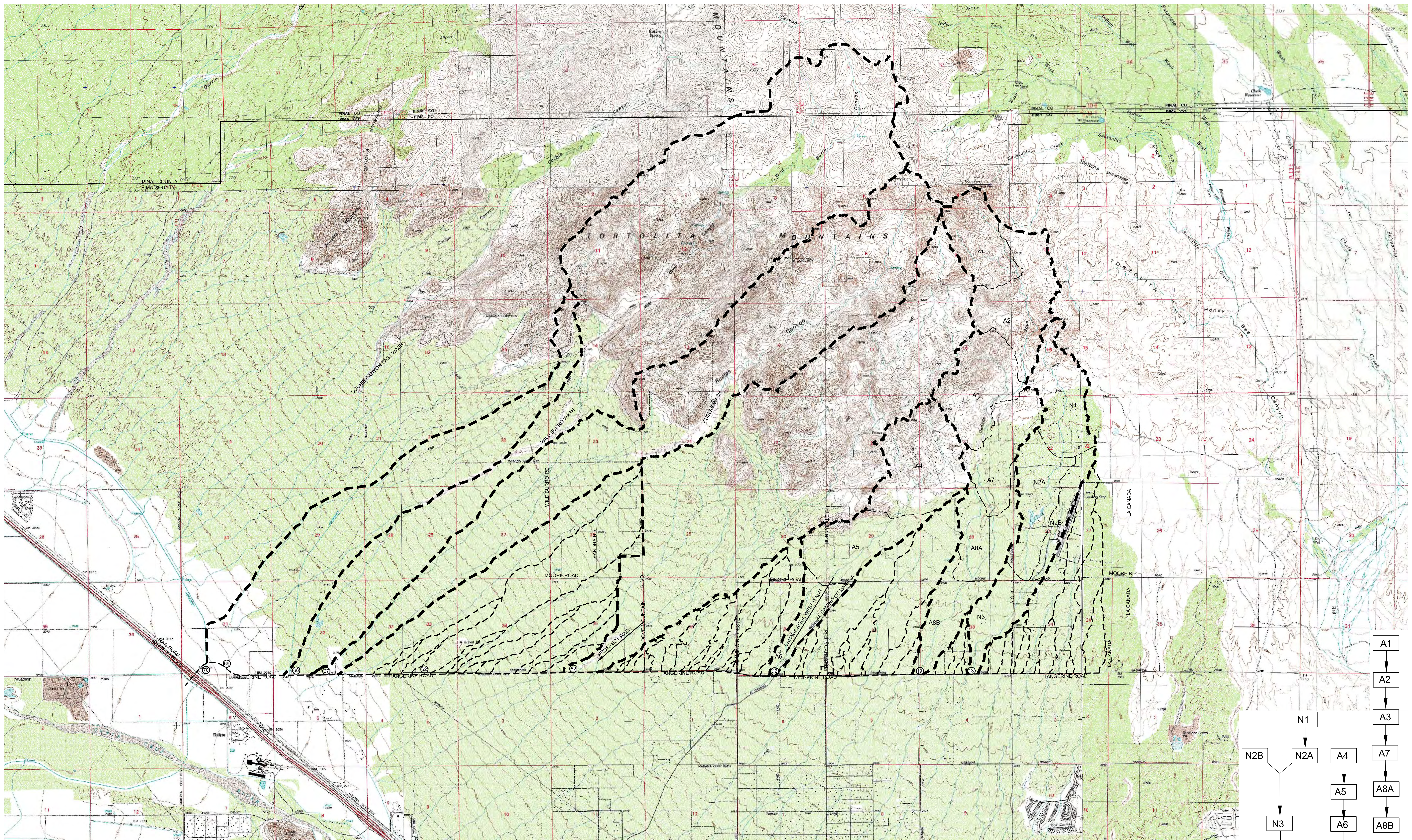
MAP REFERENCE: NATURAL RESOURCE CONSERVATION SERVICE, HYDROLOGIC SOILS MAP, SOILS SURVEY 669- EASTERN PIMA CO., 1999

CMG DRAINAGE ENGINEERING, INC.
 3555 N. Mountain Ave. Tucson, Arizona 85719
 Phone (520) 882-4244 Fax (520) 888-1421

PROJECT NO:	10-027
DESIGN:	JKW
CHECKED:	JLC
DRAWN:	BJK
DATE:	01/04/2011
REV. DATE:	-
REV. DATE:	-

FIGURE: 2
 HYDROLOGIC SOILS
 MAP

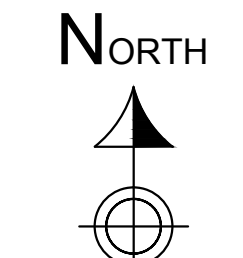
SHEET 1/1



- NOTES**
1. REGIONAL WATERSHED WITH PEAK DISCHARGE COMPUTED BY HEC-1:
CP-13, 19 & 32
 2. REGIONAL WATERSHEDS WITH PEAK DISCHARGE COMPUTED BY PC-HYDRO:
CP-62
 3. REGIONAL WATERSHEDS WITH PEAK DISCHARGE COMPUTED BY FLO-2D:
CP-52, 57, 68 & 69
 4. TOPOGRAPHY ACQUIRED FROM U.S.G.S. 7.5 QUADRANGLE MAPS. CONTOUR
INTERVAL VARIES.

LEGEND

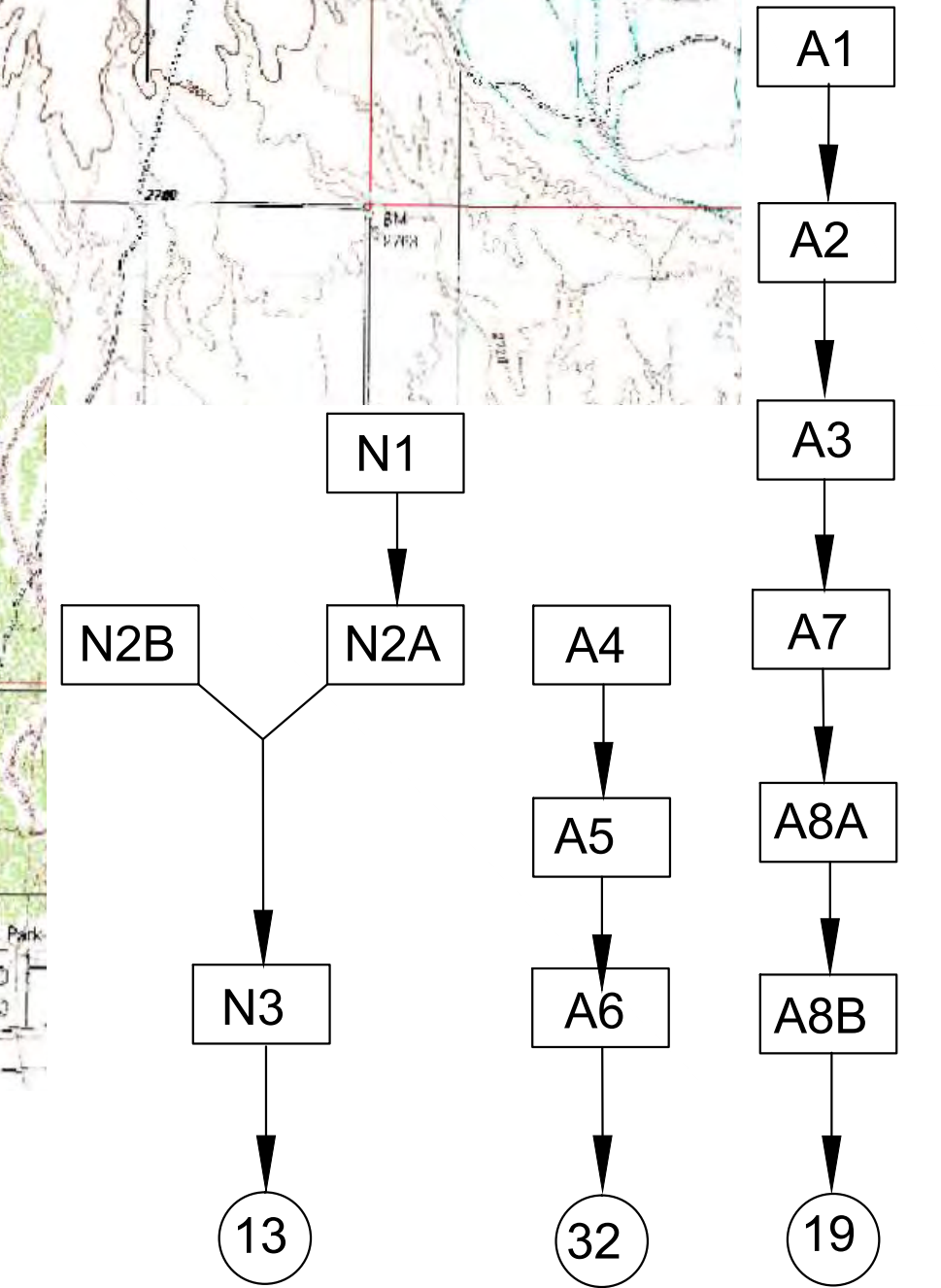
	REGIONAL WATERSHED BOUNDARIES
	LOCAL WATERSHED BOUNDARIES
	HEC-1 SUBWATERSHED BOUNDARIES
A1	HEC-1 SUBWATERSHED
13	CONCENTRATION POINT



SCALE: 1"=2000' **PRELIMINARY**

PROJECT NO.:	10-027
DESIGN:	JKW
CHECKED:	JLC
DRAWN:	BJK
DATE:	11/28/2012
REV. DATE:	-
REV. DATE:	-

CMG DRAINAGE ENGINEERING, INC.
 3555 N. Mountain Ave. Tucson, Arizona 85719
 Phone (520) 882-4244 Fax (520) 888-1421



TANGERINE RD PROJECT HEC-1 WATERSHED FLOW CHART

FIGURE 3: EXISTING CONDITIONS OFFSITE WATERSHED MAP FOR REGIONAL WATERSHEDS