



# Tangerine Road

## I-10 to La Cañada Drive



**PUBLIC OPEN HOUSE**  
Heritage Highlands Ballroom

April 7, 2011





# PRESENTATION OUTLINE

1. Project Description
2. Key Issues
3. Potential Roadway Section
4. Project Schedule
5. Public Participation





# PROJECT DESCRIPTION

- **Why improve Tangerine Road?**
  - Roadway closes during flooding
  - Some segments nearing capacity – no passing opportunities
  - No pedestrian facilities
  - Need to plan ahead for potential growth





# PROJECT DESCRIPTION

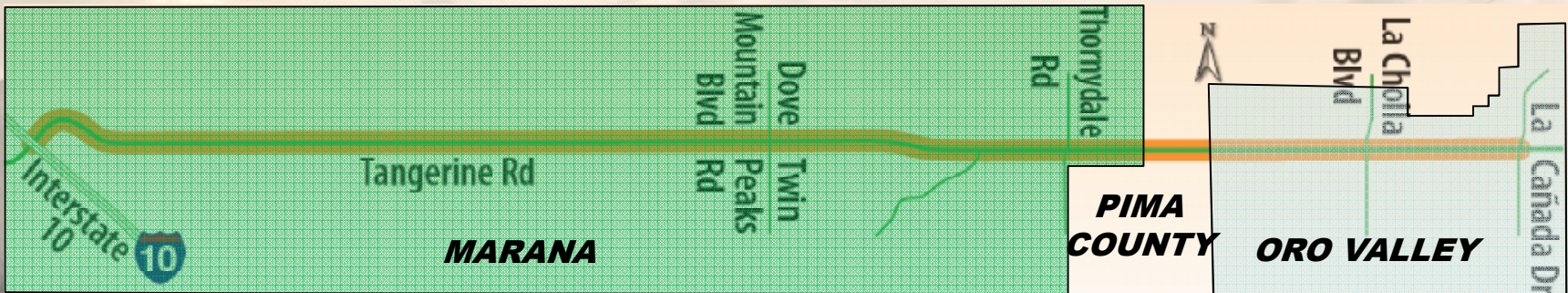
- **Goal:** Improved multi-modal mobility and safety
- Widening to 4-lanes from I-10 to La Cañada (10 mi)
  - Landscaped median
  - Multi-use lanes, sidewalks
  - Drainage improvements (eliminate dips)
  - Intersection Improvements





# PROJECT DESCRIPTION

- \$74M budget – RTA Funding allocated for 2011-2026
- Crosses 3 Jurisdictions: Marana, Oro Valley, and Pima County
- Significant Drainage, Right-of-Way, Utility Coordination, and Environmental Challenges





# KEY ISSUES

## Traffic

- Primary I-10 to Oracle Rd connection in Northern Pima County
- Volumes approaching the capacity of the existing road
- Change in traffic patterns with new Twin Peaks Road
- Significant growth expected near I-10, Dove Mountain, Thornydale



**2011 Daily Volumes**  
**2010 Daily Volumes**





# KEY ISSUES

## Drainage

- 70 drainage crossings along the corridor
- Eliminate existing dips to avoid closures during major storms

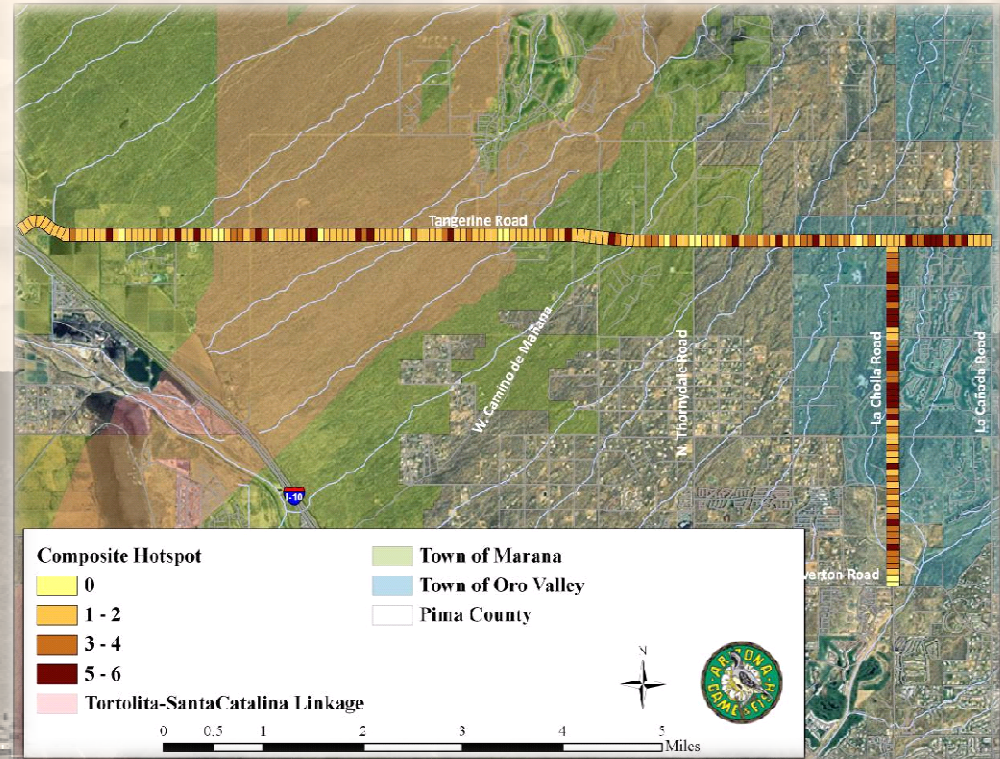




# KEY ISSUES

## Wildlife

- Critical route between the Tortolita and Tucson Mountains
- Draft Wildlife Mortality Study completed by Arizona Game and Fish
- Hotspots: Areas with above average wildlife activity from multiple species







# KEY ISSUES

## Utilities

- Tucson Water, Marana Water, OV Water, Pima County Waste Water, Qwest, Comcast, TEP, Trico in project area
- TEP lines - 138kV Transmission
  - Undergrounding infeasible
  - Relocation is costly, cannot be completed during summer





# KEY ISSUES

## Land Use

- Growth still taking place in the corridor – and could accelerate
- Marana / OV have received Right-of-Way dedications as projects are developed
- State Land Department owns 40% of the project frontage





# PRELIMINARY ROADWAY SECTION

- Cross-sections being developed
- Traffic Study underway to determine if/when 6 lanes will be needed
- Exhibits of preliminary sections available – Please give us your opinion

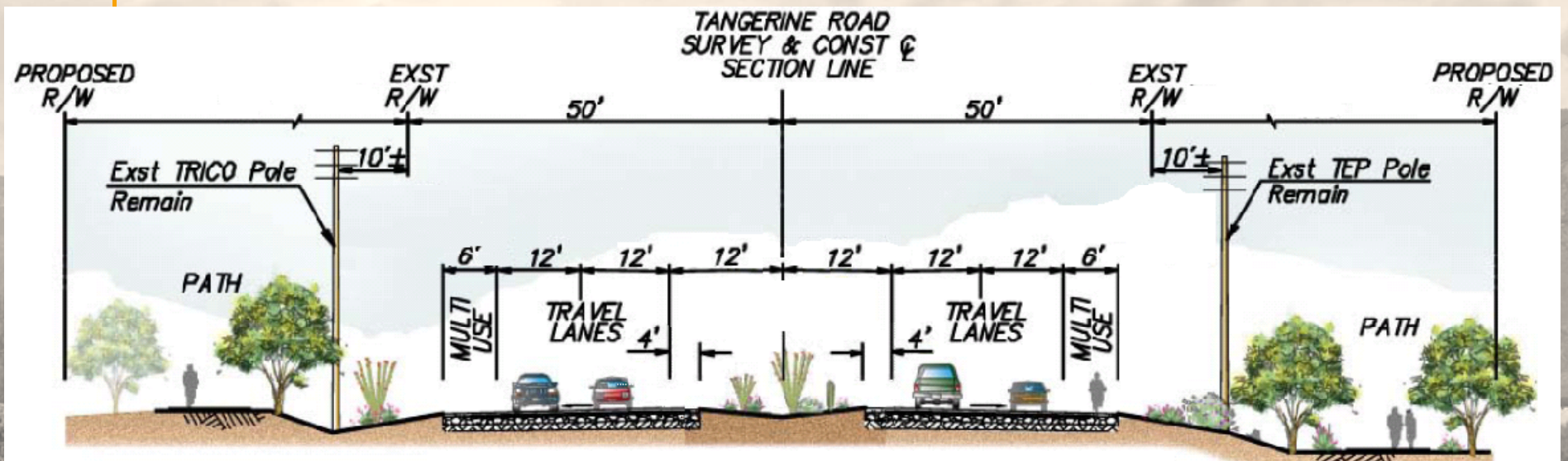




# PRELIMINARY ROADWAY SECTION

## I-10 to Thornydale

- Few driveways, traffic signals
- Higher speed – 50 mph
- Desert Parkway design – uncurbed

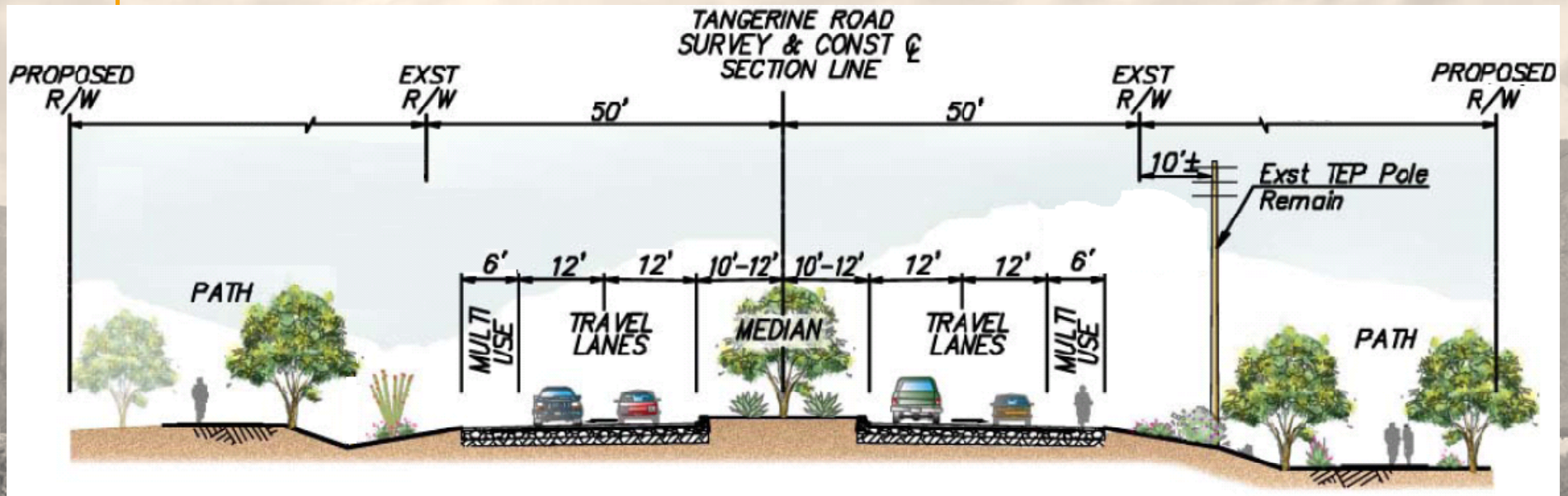




# POTENTIAL ROADWAY SECTION

## Thornydale to La Cañada

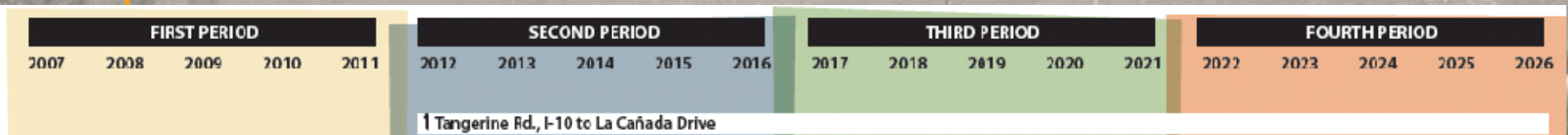
- Surrounding area mostly developed
- Fringe Urban design – 45 mph, Curbed median (similar to section East of La Cañada)





# PROJECT SCHEDULE

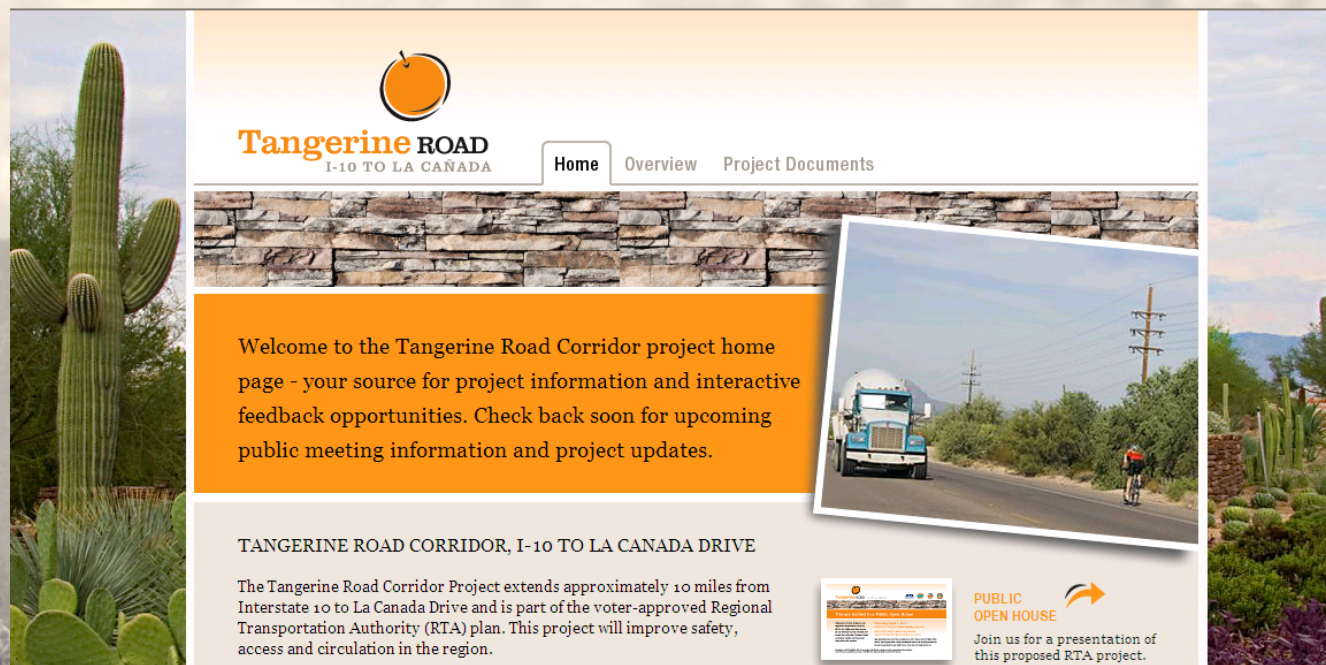
- 2010 Data Gathering of Existing Conditions (survey, right-of-way, drainage, wildlife, traffic, etc)
- 2011-2012 - Technical Studies and Preliminary Design
  - Next Open House: Fall 2011
- 2013-2014 – Segment 1 Final Design
- 2015-2016 – Segment 1 Construction
- Construction date of other segments – TBD
  - Funding allocated through 2026





# PUBLIC PARTICIPATION

- Going green - All future outreach will be electronic
- Sign up for updates and provide comments at: [www.tangerineroad.info](http://www.tangerineroad.info)
- 2 additional open houses during study phase
- Individual meetings with key stakeholders as needed





# PUBLIC PARTICIPATION

**Thank you for coming!**

Please visit the exhibits and provide input

[www.tangerineroad.info](http://www.tangerineroad.info)

